



ICKLINGHAM VILLAGER

June 2017



PLANS FOR DEVELOPMENT AT THE PLOUGH INN

A planning application is in process with FHDC for The Plough Inn, Icklingham. The above picture is an indicative Street View.

More information details can be found online at <https://planning.westsuffolk.gov.uk/online-applications>. or Email : planning.help@westsuffolk.gov.uk The reference number is DC/17/0630/OUT

The application is for Outline Planning Permission. The site comprises two distinct areas. The front portion of the site is located on & accessed by The Street. It includes the existing Plough Inn public house. This will also include two new 3 bed 1.5 storey dwelling houses, which can be accessed from The Street. The second portion is located to the south west of this and behind the main frontage of The Street and will include five new dwelling houses and associated car parking for all of the new houses and associated hard and soft landscaping.

The proposals include 21 car parking spaces on site. The main entrance to the site will be based on the existing main access to The Plough Inn's car park, this would result in minimal disruption to The Street in terms of access.



**SUMMER ART GROUP
At
ST. JAMES CHURCH**

Now we have lovely new facilities at St. James Church we would like to restart the Art Group that used to meet in the Old School Hall. If enough people are interested we will meet on the last Monday of the month from 2.00-4.00pm from April to September. Materials will be supplied for a taster session



Can't draw ?
We have printed pictures available
Please call Karen on 710966 or 07930935455 if you would like to join in.

This message is being broadcast on behalf of Suffolk Trading Standards

We've had many reports of traders going door to door across the County offering to sell chainsaws and generators. Reports have been received in Ipswich, Stowmarket and Beccles. Please be especially cautious of any individual who approaches you and offers to sell you something at a incredibly reduced price. Trust your instincts – If it sounds too good to be true, it probably is! Anyone who is offered goods for sale out the back of a van, by a person who approaches them in the street, or uninvited at the doorstep, should be highly suspicious. Goods sold in this way may be stolen, counterfeit, unsafe or simply overpriced. Our advice is simply never to deal with traders in this way. Anyone who is suspicious of goods offered for sale in this way should report the matter to Suffolk police by contacting the number 101, or by calling us via the Citizens Advice Consumer Service on 03454 04 05 06.

**Icklingham Community Group
SUMMER WALK to WEST STOW this Saturday
3rd JUNE
WE WILL MEET ON THE GREEN
IN FRONT OF ALL SAINTS CHURCH
at 10.30 am
Come and join us to walk or meet us for
Coffee & Cake at The West Stow Café
All Welcome**

**Want to help your Village ? Get involved ?
There are two vacancies for a Parish councillor, if you would like to find out more about being a Parish Councillor please come along to the meeting on 15th June or email the Clerk of the PC, Su Field on IcklinghamPC@gmail.com**



POLICE CONNECT
Keeping you informed, keeping your community safe

This message is being broadcast on behalf of Action Fraud
 Following the ransomware cyber attack on Friday 12 May which affected the NHS and is believed to have affected other organisations globally, the City of London Police's National Fraud Intelligence Bureau has issued an alert urging both individuals and businesses to follow protection advice immediately and in the coming days.

Ransomware is a form of malicious software (Malware) that enables cyber criminals to remotely lock down files on your computer or mobile device. Criminals will use ransomware to extort money from you (a ransom), before they restore access to your files. There are many ways that ransomware can infect your device, whether it be a link to a malicious website in an unsolicited email, or through a security vulnerability in a piece of software you use.

The National Cyber Security Centre's technical guidance includes specific software patches to use that will prevent uninfected computers on your network from becoming infected with the "WannaCry" Ransomware

<https://www.ncsc.gov.uk/guidance/ransomware-latest-ncsc-guidance>

Key Protection advice:

- Install system and application updates on all devices as soon as they become available.
- Install anti-virus software on all devices and keep it updated.
- Create regular backups of your important files to a device (such as an external hard drive or memory stick) that isn't left connected to your computer as any malware infection could spread to that too.
- Only install apps from official app stores, such as Google's Play Store, or Apple's App Store as they offer better levels of protection than some 3rd party stores. Jailbreaking, rooting, or disabling any of the default security features of your device will make it more susceptible to malware infections.

Phishing/smishing

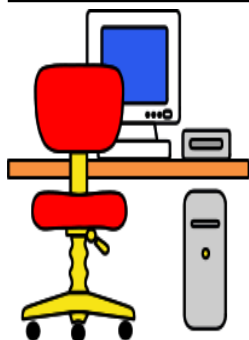
Fraudsters may exploit this high profile incident and use it as part of phishing/smishing campaigns. We urge people to be cautious if they receive any unsolicited communications from the NHS. The protect advice for that is the following:

- An email address can be spoofed. Don't open attachments or click on the links within any unsolicited emails you receive, and never respond to emails that ask for your personal or financial details.
- The sender's name and number in a text message can be spoofed, so even if the message appears to be from an organisation you know of, you should still exercise caution, particularly if the texts are asking you to click on a link or call a number.

Don't disclose your personal or financial details during a cold call, and remember that the police and banks will never ring you and ask you to verify your PIN, withdraw your cash, or transfer your money to another "safe" account.

If you have been a victim of fraud or cyber crime, please report it to Action Fraud at

<http://www.actionfraud.police.uk/>



For Sale

**Computer desk
 and Padded Office chair**

£5.00 each

**Please call Jean on
 01638-714112**

Do you need any Topsoil ?

The Jacksons have a huge mound of topsoil that is piled on the grass outside their back garden.

It's free to anyone who wants it - to collect it - either the whole lot or just a few bags. Call 07729053419 or 07342039305



The Patient Revolution 2017 - Have your say on health-care in West Suffolk, this event gives the public in the chance to raise the health issues that matter to them. The 6th annual conference of the NHS West Suffolk Clinical Commissioning Group (WSCCG) is open to patients of all ages and their families and carers as well as representatives of community, voluntary & charitable organisations.

The 2017 Patient Revolution event takes place on Wednesday 12 July at The Athenaeum, Angel Hill, Bury St Edmunds Anyone can attend the afternoon session 2-5 pm. The Patient Revolution provides the chance to tell the CCG about the health issues that matter most to the public. An 'open space' technique is used, which means there are no set discussion groups and no preconceptions – it is up to attendees to set the agenda. People set the topics for discussion, which gives everyone the opportunity to talk about the health issues that matter to them.

Information from previous Patient Revolution events has fed into the planning as the CCG works towards the aim of delivering the highest quality health service in west Suffolk through integrated working.

The event is also a great networking opportunity to meet staff from the clinical commissioning group, other statutory and voluntary sector organisations, local GPs and like-minded people from the community. To reserve your place on 12 July, or call 01473 770014 or email getinvolved@westsuffolkccg.nhs.uk.

ICKLINGHAM PARISH COUNCIL

The PC minutes are available on the website OneSuffolk for Icklingham and on the new PC notice Board by The Red Lion. Your Parish councillors are Darren Baugh, Karrie Baugh, Helen Graham & Ronnie Halford.

There are two vacancies for a Parish councillor, if you would like to be a Parish councillor please come along to the meeting or email the Clerk of the PC, Su Field on IcklinghamPC@gmail.com

Meeting dates for 2017

15th June

6th July

7th September

2nd November

Meetings start at 7.30pm

If you would like an item included on the agenda for the next meeting please email the clerk on IcklinghamPC@gmail.com

Every meeting has a Public Forum for ten minutes at the start of each meeting.
Everyone is welcome to attend.



PAINTER & DECORATOR

Internal and External Work

Professional
Conscientious
Reliable
Recommended

01638 429976
07722617430



www.alanwisbeach-decorating.co.uk

Email ALAN on alan8358@hotmail.com

THE COSY CABIN AT RISBY - WORKSHOP LIST

The Risby Barn, South Street, Risby, Bury St Edmunds, Suffolk, IP28 6QU
01284 811222

E-mail: cosycabin@btconnect.com

Saturday 3rd June (10am - 4pm)

Get to Know your Sewing Machine with Barbara Prior
Are you having or have you had a new sewing machine? Or, has it been in the cupboard for ages and you want to dust it off and start the New Year with a new hobby? Well this could be the workshop for you. Come and learn all about your Sewing Machine, from how to clean it and look after it, to what the feet are for, how to do button-holes and much, much more.

Workshop Fee - £30.00 (This does not include materials)

Saturday 10th June (10am - 1pm) Make your own Pin-board/Noticeboard with Gill Allan. This is a brand new mini-workshop with Gill, where you will make your very own pinboard/noticeboard. Gill will supply the pre-cut chipboard, wadding, lining to go on the back, hanging plates and decorative pins for a fee on the day of £15.00 (cash please) and you will bring along your fabric and ribbon. These pinboard/noticeboards are so useful and you can coordinate it to your room of choice. If you have a staple gun, please bring it with you. Workshop Fee - £15.00 (This does not include materials)

Saturday 10th June (10am - 4pm) Beginners Raw Edge Appliqué Cushion or Tote Bag with Tina Finbow. This course is aimed at Beginners, and during the day you will learn about basic raw edge appliqué using your sewing machine and you will make an envelope back cushion with a selection of flowers on it. Workshop Fee - £30.00 (This does not include materials)

Sunday 11th June (10am - 4pm) Sit & Sew Sunday. This is our new monthly event - come and have a relaxing day with likeminded people and work on your own sewing project, £5.00 for the table for the day and includes tea/coffee. Please book to confirm your place.

Workshop Fee - £5.00 (This does not include materials).

For more classes/courses please contact
The Cosy Cabin

Strawberry Mascarpone Tart

For the crumb case

75g/3oz butter

250g/9oz almond, orange or sweet oat biscuits

For the filling

1 large free-range egg, separated

1 tbsp caster sugar

250g/9oz mascarpone cheese

2 drops vanilla essence

250g/9oz fresh strawberries, hulled, thinly sliced

For the crumb case, melt the butter in a small saucepan.

Place the biscuits in a food processor and process to fine crumbs (alternatively, place in a plastic bag and bash with a rolling pin, taking care not to split the bag).

Mix the crumbs thoroughly with the melted butter and spoon into a 25cm/10in diameter loose-bottomed flan tin. Press the crumbs firmly over the base and up the sides of the tin to cover completely. Transfer to the fridge to chill until firm.

For the filling, place the egg yolk into a bowl with the caster sugar and whisk together. Add the mascarpone and beat until thoroughly combined. Stir in the vanilla essence.

In a separate bowl, beat the egg white with a clean whisk until stiff peaks form when the whisk is removed from the bowl. Gently fold the egg white into the mascarpone mixture.

Remove the biscuit case from the fridge. Spoon the mascarpone mixture into the biscuit case and gently smooth the top with a spatula. Arrange the sliced strawberries on top of the mascarpone.

Transfer to the fridge and chill. Remove the tart from the fridge 20 minutes before serving. Enjoy



ST. JAMES CHURCH SERVICES



11th June Service of the Word 9.30am

Contact the Church Wardens for more information Dorothy Handford 712439 or Sue Marston 713801

LIBRARY VAN

The Library Van has a good selection of adult and children's books on board & they will order any books in for you. The Library van will visit on 3rd June, 1st & 28th July, 26th August calling at West St at 2.40pm, The Hall Close at 3.10pm & The Village Green at 3.25pm. The Mobile Manager is Kevin Lambert 07884422762



Old School Hall – Icklingham.

Available for hire

Meetings – Parties – Clubs

Rates variable to suit.

From £12 to £20 per hour,

£50 half day – £90 full day.

Contact David on 07751765047

Phone 01284 728768

fax 01284 729166

email david.a.fisher@btinternet.com

YOGA CLASS EVERY WEDNESDAY

AT THE OLD SCHOOL HALL

6.45pm to 7.45pm

Just come along and join in

LAST BUT NOT LEASThave you a special person you want to Thank, wish Good Luck, Happy Birthday, Getting Married, say Get well soon or a New arrival ? Well this is the space for you – just email bac@talk21.com or phone 01638 719055 and let me know your special message and it will appear here free of charge..

HAPPY 40th BIRTHDAY
to Claire Marston
on 25th June
With love from all
your friends
in the Village



If you have something you would like to put in The villager just let me know and I will put it in the newsletter for you. Email bac@talk21.com or drop in my post-box at 59 The Street

COFFEE MORNING at ST JAMES CHURCH

24th JUNE 10.30 am
cakes & Books for Sale
ALL WELCOME
come along and meet friends and neighbours.

Please see ACW Building Services on Facebook !

ACW BUILDING SERVICES

Bathrooms, Kitchens, Plumbing, Tiling, Plastering, Carpentry, Renovations, Extensions.

Adrian White

Builder

105 The Street Icklingham
Bury St Edmunds
Suffolk
IP28 6PL

07900000413

acwhite105@yahoo.com



NOTICE BOARD

The Villagers Notice



Board has now been painted and is being well used !

Please feel free to advertise events, items for sale etc.

Many thanks to the PC for donating the Board for our use.

ARBORICULTURAL AND LANDSCAPE SOLUTIONS

ALL ASPECTS OF TREE SURGERY

SOFT AND HARD LANDSCAPING

MAINTENANCE AND LAWN CARE

DOMESTIC & COMMERCIAL CONTRACTS

FULLY INSURED

NPTC QUALIFIED



GREEN SCENE

CONTACT FOR FREE QUOTATIONS AND ADVICE

01638 515911 / 07866 866880

INFO@GREENSCENETREESURGERY.CO.UK